

Location Designations:

Pad-to-Tank (Designated with an 'A' codes)

Code	Description	Location	Inspect
A1	Outboard sill pad-to-tank transverse weld.	A- & B-Ends	Full length of weld, including portion around corner of pad.
A2	Front sill pad longitudinal welds.	AR, AL, BR, BL	Full length of weld to termination at bolster pad.
A3	Fillet weld in front sill pad-to-tank cutout.	A- & B-Ends	Full length of weld.
A4 ¹	Sill pad longitudinal weld.	AR, AL, BR, BL	Last 6" of weld from termination.
A5	Outboard sill pad-to-bolster pad transverse weld.	A- & B-Ends	Full length of weld.
A6	Inboard termination of sill pad longitudinal welds.	AR, AL, BR, BL	Last 6" of weld to termination.
A7 ²	Sill pad-to-bolster pad transverse weld.	A- & B-Ends	Full length of weld.
A8	Sill pad-to-tank slot welds.	A- & B-Ends (2 to 16 places per car)	Inboard and outboard slot welds,
A9	Bolster pad-to-tank transverse weld.	ARO, ARI, ALO, ALI, BRO, BRI, BLO, BLI	36" from junction with cradle pad.
A10	Top-of-bolster pad longitudinal weld.	AL, AR, BL, BR	Full length of weld

¹ On cars with continuous cradle, this weld is located at front sill pad-to-cradle pad weld termination.

² Does not apply to cars with continuous cradle pad.

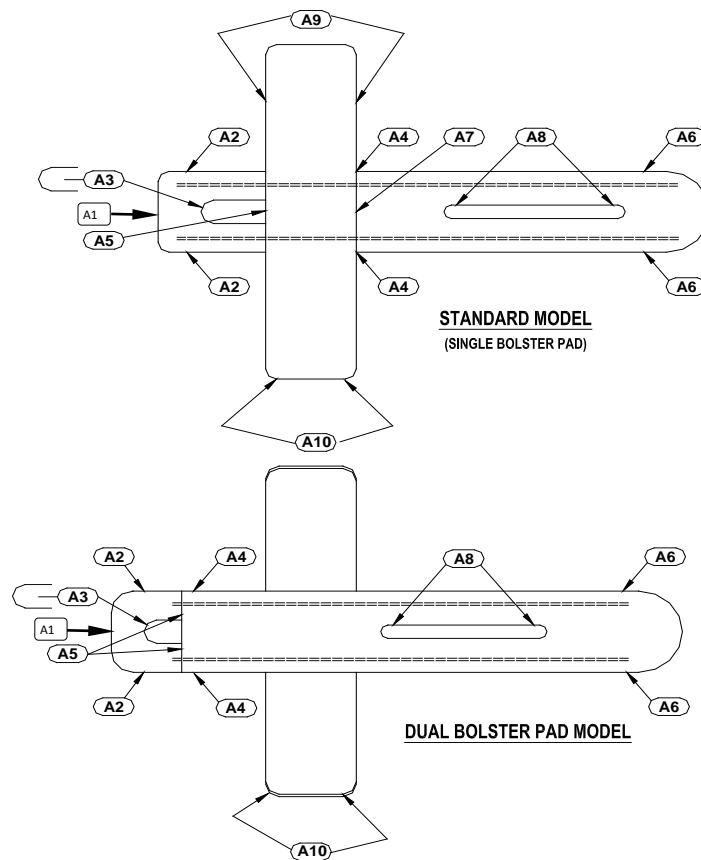
Use the "Generic Tank Head Brace." template for head brace defects.

Use the "Generic Body Bolster." template for body bolster defects.

Use the TCID "Record Shell/Sill Damage" button for:

- All parent metal defects.
- All structural defects outside the scope of these templates.

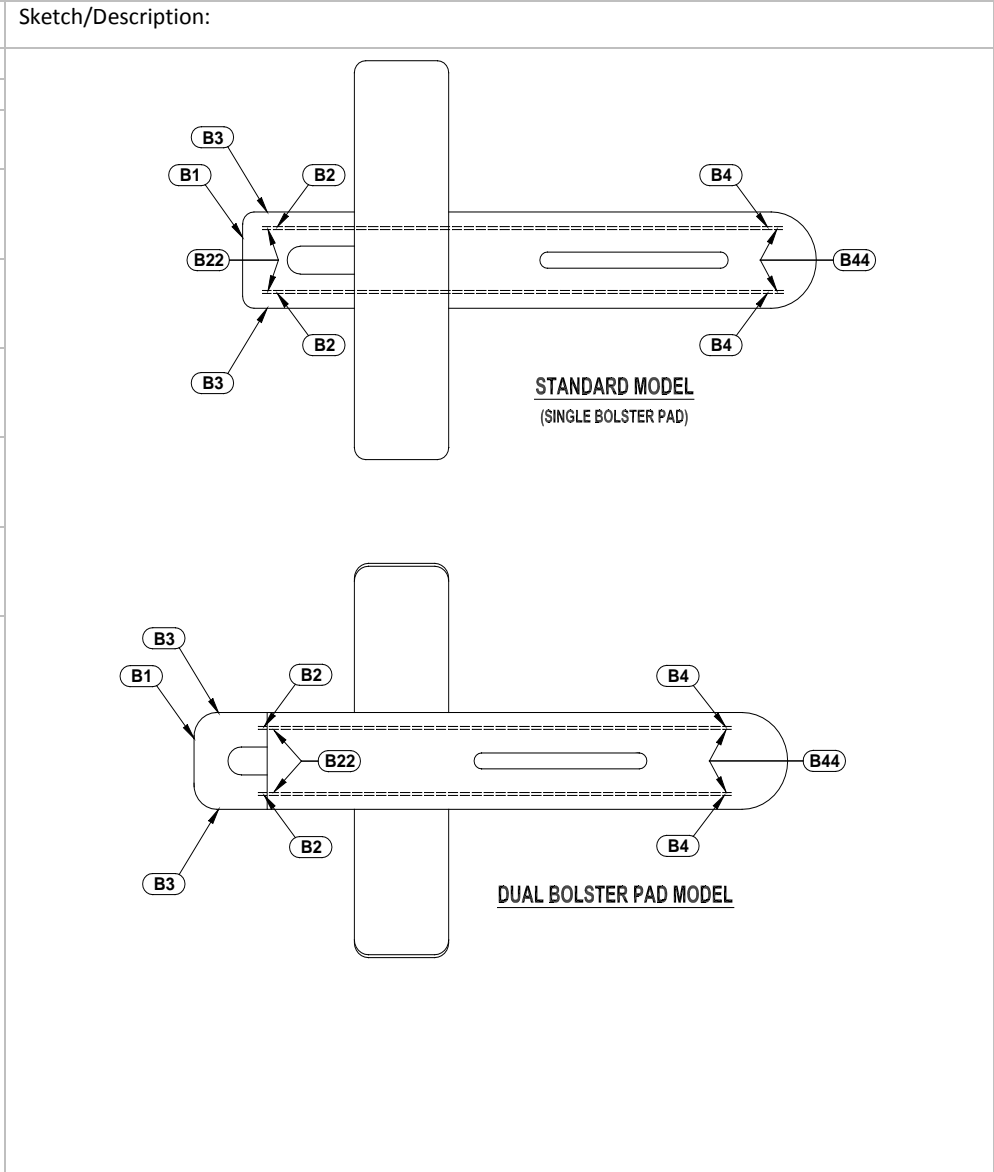
Sketch/Description:



Location Designations:

Sill-to-Pad Welds (Designated with an 'B' code)

Code	Description	Location	Inspect
B1	Transverse welds (top of sill flange).	A- & B-Ends	Full length of weld. Inspect from top of sill.
B2	Outboard termination of longitudinal weld (outside of sill).	AR, AL, BR, BL	Last 6" of weld to termination.
B3	Transverse welds (bottom of top sill flange).	A- & B-Ends	Full length of weld from inside of sill.
B4	Inboard termination of longitudinal weld (outside of sill).	AR, AL, BR, BL	Last 6" of weld including any portion of weld that wraps around sill and connects with B44.
B22	Outboard termination of longitudinal weld (inside of sill).	AR, AL, BR, BL	Last 6" of weld.
B44	Inboard termination of longitudinal weld (inside of sill).	AR, AL, BR, BL	Last 6" of weld.



Use the "Generic Tank Head Brace." template for head brace defects.
 Use the "Generic Body Bolster." template for body bolster defects.
 Use the TCID "Record Shell/Sill Damage" button for:

- All parent metal defects.
- All structural defects outside the scope of these templates.