

Location Designations:

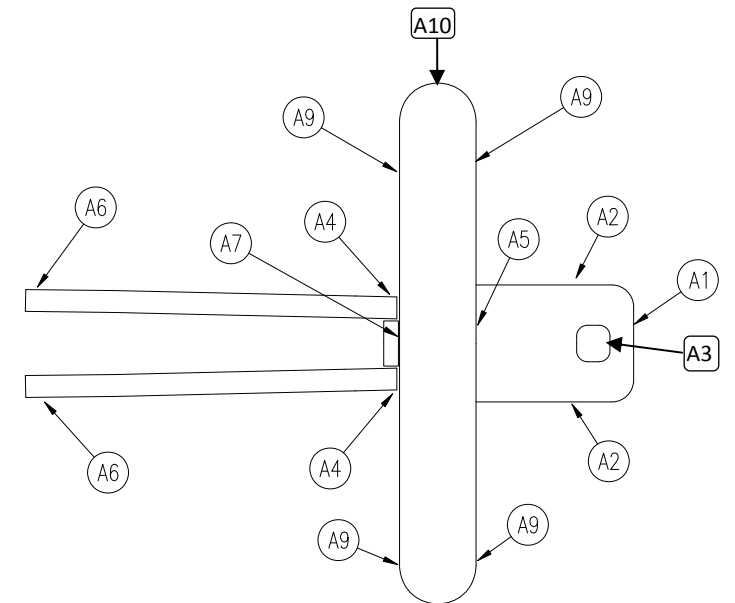
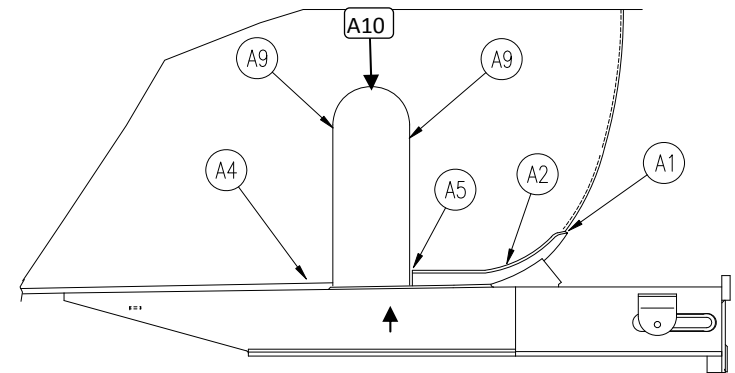
Pad-to-Tank Welds (Designated with an 'A' code)

Code	Description	Location	Includes
A1	Outboard sill pad-to-tank transverse weld	A- & B-Ends	Full length including weld around corner of pad.
A2	Outboard longitudinal pad-to-tank weld	AR, AL, BR, BL	Full length of weld to termination @ bolster.
A3	Fillet weld - outboard sill pad-to-tank cutout.	A- & B-Ends.	Complete weld.
A4	Sill pad longitudinal weld – outboard termination.	AR, AL, BR, BL	6" of weld from termination.
A5	Second full-transverse sill pad weld	A- & B-Ends	Complete weld.
A6	Inboard termination of sill pad longitudinal welds.	AR, AL, BR, BL	On non-continuous pads, inspect last 6" of weld including wrap around to weld termination.
A7	Inboard sill pad to bolster pad transverse weld.	A- & B-Ends	Complete weld.
A9	Bolster pad-to-tank transverse weld.	ARO, ARI, ALO, ALI, BRO, BRI, BLO, BLI	36" from junction with cradle pad.
A10	Top of bolster pad longitudinal weld.	AR, AL, BR, BL	Complete weld.

Use the "Generic Tank Head Brace." template for head brace defects.
 Use the "Generic Body Bolster." template for body bolster defects.
 Use the TCID "Record Shell/Sill Damage" button for:

- All parent metal defects.
- All structural defects outside the scope of these templates.

Sketch/Description:



Sill-to-Pad Welds (Designated with an 'B' code)

Code	Description	Location	Includes
B2	Outboard termination of longitudinal weld (outside of sill).	AR, AL, BR, BL.	Last 6" of weld to termination.
B4	Inboard termination of longitudinal weld (outside of sill).	AR, AL, BR, BL.	Last 6" of weld including any portion of weld that wraps around sill and connects with B44.
B22	Outboard termination of longitudinal weld (inside of sill).	AR, AL, BR, BL.	Last 6" of weld.
B44	Inboard termination of longitudinal weld (inside of sill).	AR, AL, BR, BL.	Last 6" of weld.

Use the "Generic Tank Head Brace." template for head brace defects.

Use the "Generic Body Bolster." template for body bolster defects.

Use the TCID "Record Shell/Sill Damage" button for:

- All parent metal defects.
- All structural defects outside the scope of these templates.

