



TAKE CONTROL WITH REAL-TIME EXCEPTION MANAGEMENT AND REPORTING

Built on the RailSight™ CLM engine, RailSight Monitor supports mission-critical business decisions by providing complete, up-to-date and accurate location data. RailSight Monitor delivers unmatched rail supply-chain visibility — all in one easy-to-use, hosted solution.

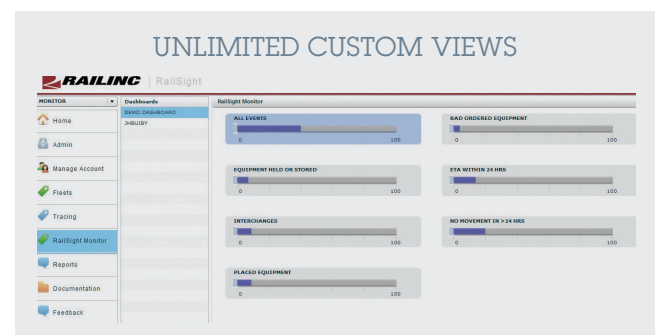
ACCELERATE YOUR RETURN ON INVESTMENT

RailSight™ Monitor offers affordable pricing, accelerated implementation and comprehensive IT support for an unbeatable total cost of ownership. With the easy, web-hosted solution, you can be up and running in a matter of days with little to no additional IT support for a quicker return on your investment. The rail shipment and equipment management tracking resource is a convenient, standalone resource and the ideal complement to any enterprise-resource planning software.

REAL-TIME EXCEPTION MANAGEMENT AND REPORTING

Whether you are tracking railcar shipments, intermodal shipments or equipment, RailSight Monitor gives you unlimited customized dashboards from a single source so you can quickly identify and act on issues before they become even bigger problems. Schedule custom trace reports to run automatically, and for frequent queries, you can schedule reports to run at predetermined times and have the results emailed to you and up to 10 additional email addresses.

RailSight Monitor's on-screen dynamic sorting and filtering means you'll never have to worry about missing an important piece of data. With all this information at their fingertips, your logistics personnel will realize increased productivity and higher performance.



MONITOR GIVES YOU REAL-TIME, IMMEDIATE AND ACTIONABLE INFORMATION SO YOU CAN:

- Quickly identify problem cars and shipments with exception reporting and views
- Easily track equipment for daily operations planning and fleet optimization
- Manage loaded and empty equipment



CUSTOMIZED MONITORING SUPPORTS BETTER DECISION MAKING

RailSight Monitor's unlimited, customizable dashboards offer real-time access to your key performance metrics, supporting intelligent, timely business and supply-chain decisions. Whether you want to configure views based on company location, events, ETAs, no movement, or all of these and more, RailSight Monitor gives you advanced customization with a simpler, industry-standard tool, allowing you to tailor practices and processes to meet your specific business and user needs.

The solution's streamlined dashboard display offers instant snapshots of your designated key performance metrics and provides relevant real-time trend graphs and ad-hoc reports without the distracting clutter. You can move from a summary level to greater detail with direct drill-down capability, and you can see real-time information to proactively manage for better results.

POWERED BY THE INDUSTRY LEADER IN SECURE RAIL DATA

RailSight Monitor is powered by the RailSight CLM engine, giving you immediate access to 7.5 million rail events each day and deeper short-line rail data. RailSight Monitor tracks railcars and intermodal shipments/equipment on more than 530 rail carriers throughout North America. Railinc is the proven industry leader in rail data for over 30 years, making RailSight Monitor the single-most complete source uniquely positioned to meet your business needs, now and in the future.

You never have to worry about the security of your company's critical business information with RailSight's multiple levels of security. RailSight applies the strictest rail industry standards, including party-to-waybill security and supplemental checks for hazardous material to ensure only the right people see the right information.

ONLY RAILSIGHT MONITOR GIVES YOU:

- An easy-to-use, hosted solution with minimal IT impact and rapid implementation
- Unlimited, custom views and dashboards configured to your business needs
- An easy way to track equipment and shipments for daily operations planning and fleet management
- Customizable reports that can be scheduled to run automatically
- A streamlined view with only the information you want to see
- A single application that eliminates the piecemeal approach of linking and managing data from different vendors
- Up-to-the-minute visibility into critical fleet data, including free-runners
- Easy-to-use downloads in CSV format
- Dynamic sorting, filtering and updating

To learn more about RailSight Monitor, visit the Railinc website at www.railinc.com or contact the Railinc Customer Support Center toll free at (877) 724-5462 or by email at csc@railinc.com.

