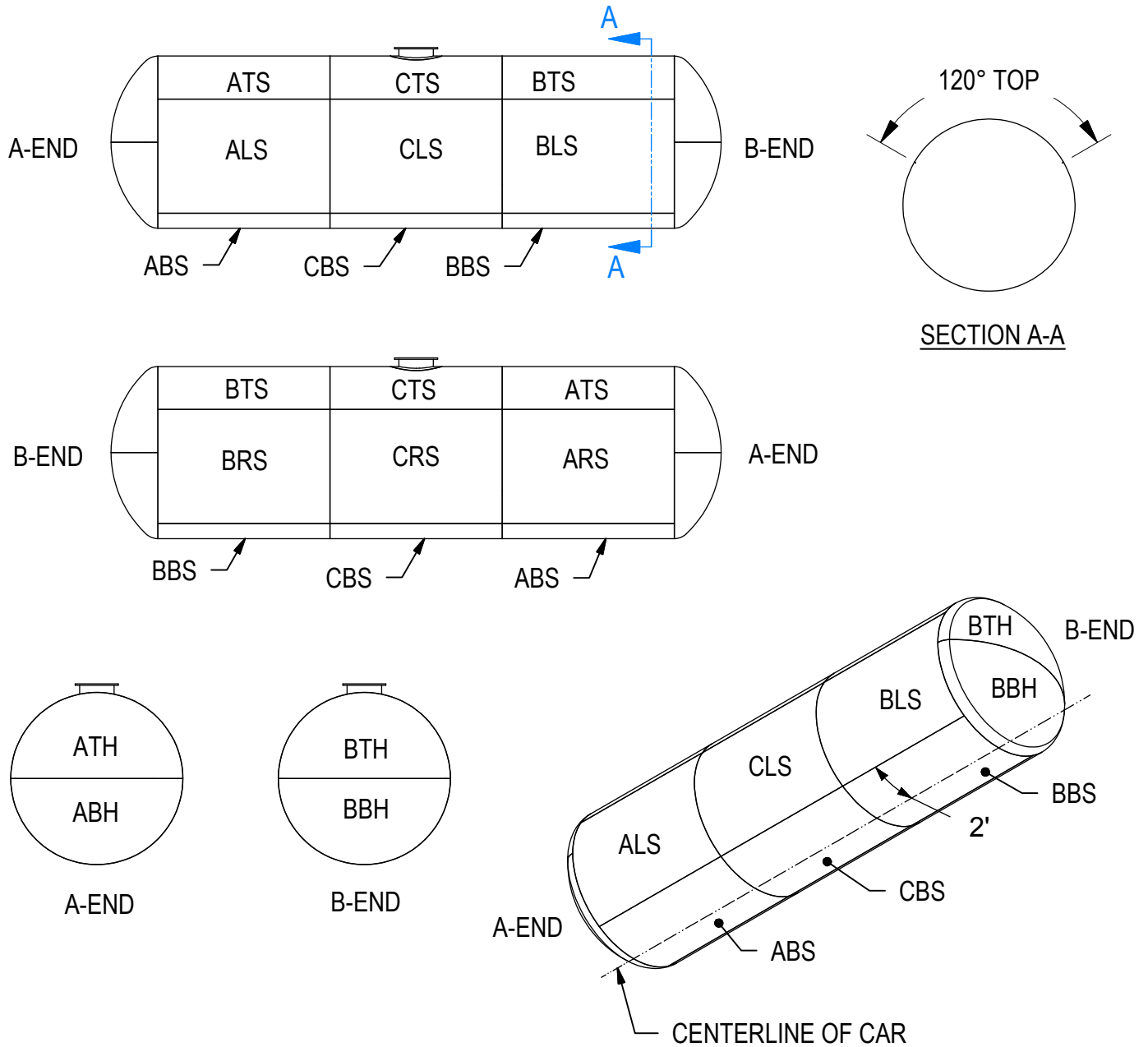


TANK LOCATION CHART



LEGEND

ATS = A-end top shell
 ABS = A-end bottom shell
 ARS = A-end left shell
 ALS = A-end left shell
 ATH = A-end top head
 ABH = A-end bottom head

CTS = Center top shell
 CRS = Center right shell
 CBS = Center bottom shell
 CLS = Center left shell

BTS = B-end top shell
 BBS = B-end bottom shell
 BRS = B-end right shell
 BLS = B-end left shell
 BTH = B-end top head
 BBH = B-end bottom head

Note: By convention, "Right" and "Left" sides are relative to a vantage point facing the B-end of the car.