

Welcome to Railinc's Umler Training Resources

- Training Module Series
 - **Umler: Getting Started**
 - Umler: Core Functions 1
 - Umler: Core Functions 2
 - Umler: Administration Functions
- Training Module Slide Sets
- Web demos on Railinc.com

Umler: Getting Started

Agenda

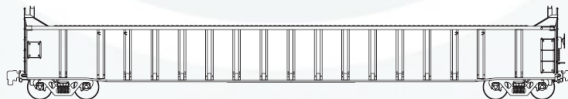
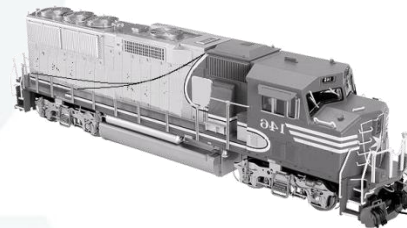
- Introduction
- Benefits of the New Umler system
- Interface & Navigation
- Components
- User Resources
 - Guide and Specification Manual
- Umler Site

A large, light gray stylized letter 'U' is centered on the slide. At the base of the 'U' is a red trapezoidal shape that tapers towards the center, resembling a stylized base or a small bridge.

Introduction to Umler changes

Introduction

Railinc worked directly with the major railroads, equipment owners, and equipment builders to redesign the legacy UMLER system.

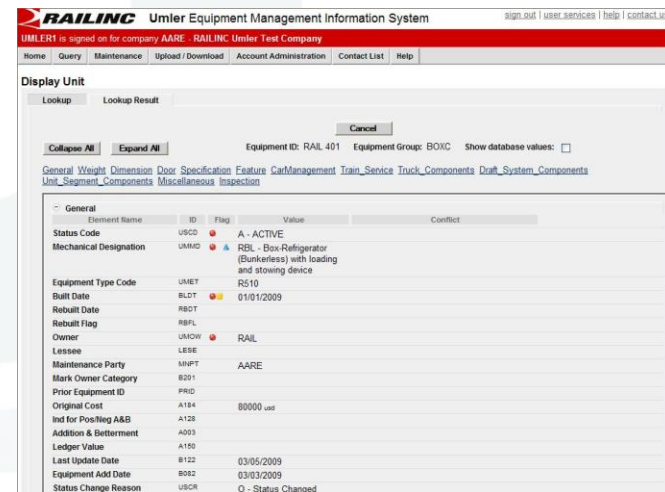
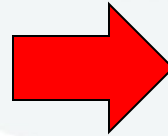





Interface & Navigation Functionality

New User Interface

The new web interface is more dynamic and provides more content than the legacy TSUM/Umler online interface



Navigation is easier

 **Umler Equipment Management Information System** [sign out](#) | [user services](#) | [help](#) | [co](#)

RTSOLIS is signed on for company **AARE - RAILINC Umler Test Company**

[Home](#) | [Query](#) | [Maintenance](#) | [Upload / Download](#) | [Railinc Admin Functions](#) | [Account Administration](#) | [Contact List](#) | [Help](#)

[Add/Change/Delete >](#)
[Car Management >](#)
[Inspections](#)
[Company-Specific Equipment Groups >](#)
[Notice Management](#)
[Suspended Work](#)
[Manage Future Transactions](#)

[Add Equipment](#)
[Clone Equipment](#)
[Add-Back Equipment](#)
[Modify Single Equipment](#)
[Modify Multiple Equipment](#)
[Single Restencil](#)
[Multiple Restencil](#)
[Change Equipment Group](#)
[Update Equipment Maintenance Party](#)
[Delete Equipment](#)

Single Equipment Lookup:
Equipment units in conflict: 1

Welcome to t
The Umler Sand
of the 3.2 releas
Your Training ID
initial/mark.
First, create an
[Clone Equipment](#) to clone any of the followi

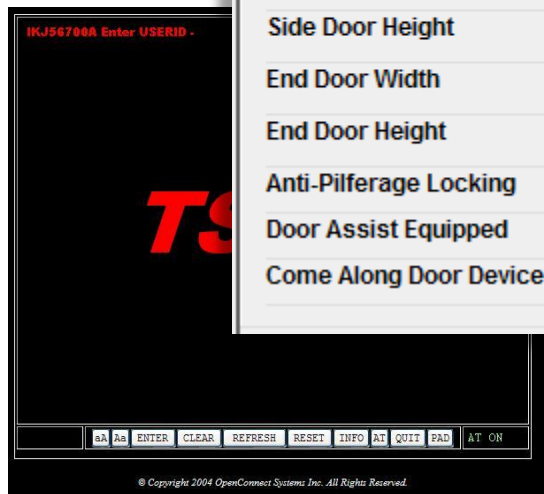
Equipment Group	Equipment ID
Boxcar	RAIL 101
Gondola	RAIL 601
Hooper	RAIL 701
Intermodal Flat	RAIL 9051
Locomotive	RAIL 801
Tankcar	RAIL 201
VFLT	RAIL 2501

[Add/Change/Delete >>](#)

Please create any equipment number with the AARE initial/mark for your target ID when cloning. After you have created the new equipment record, you can try reporting inspections or re-stenciling the equipment to learn many of the new features and benefits of the system.

New User Interface - Dropdowns

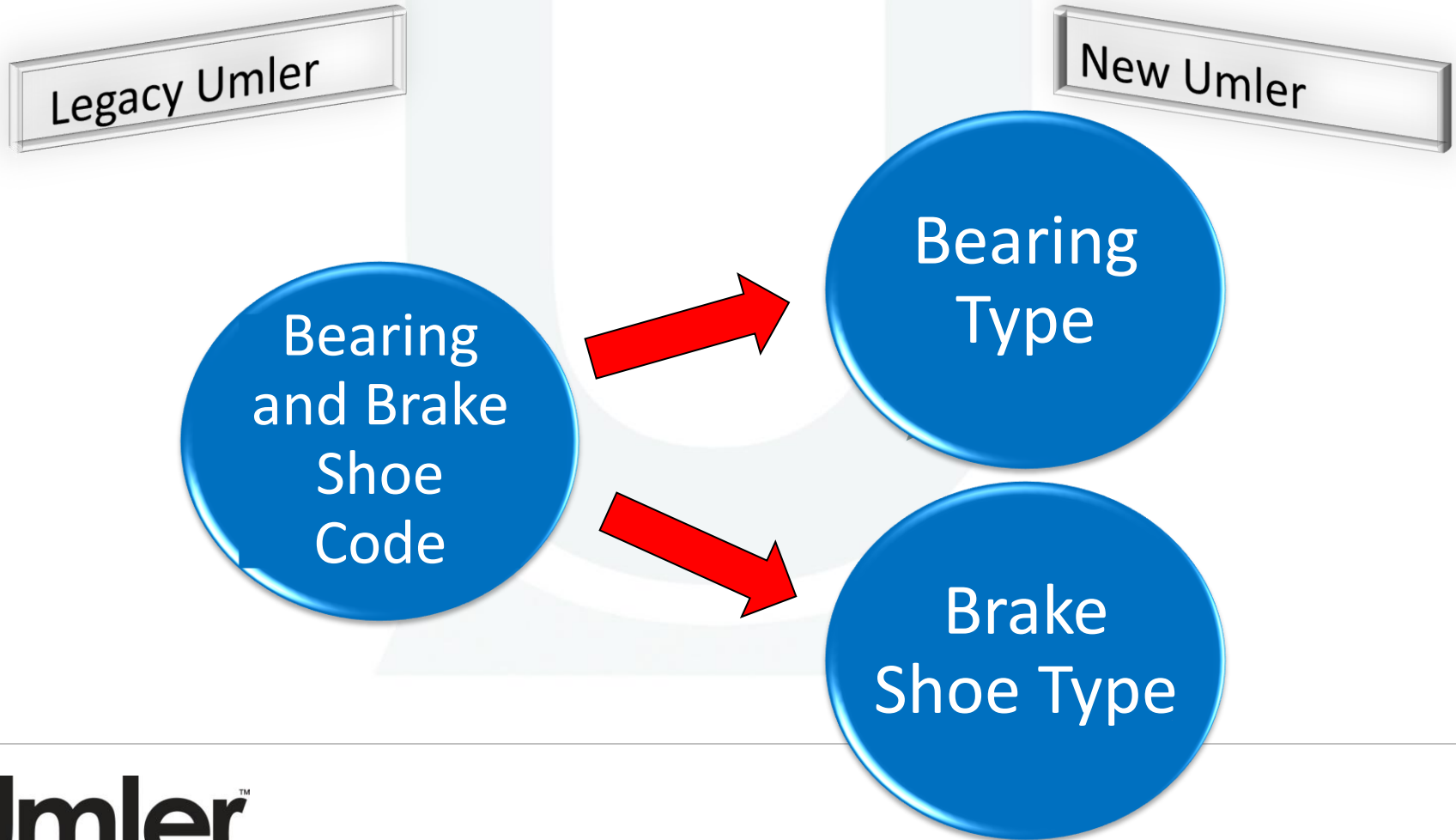
The new web interface is more dynamic and provides a more intuitive way to manage TSUM



Door	Element Name	ID	Flag	Value
	Side Door Type	B193	⚠	<input type="text"/>
	Box Side Door Orientation	B192		<input type="text"/>
	Side Door Width	A240	⚠	<input type="text"/>
	Side Door Height	A238		<input type="text"/>
	End Door Width	A082		<input type="text"/>
	End Door Height	A080		<input type="text"/>
	Anti-Pilferage Locking	B016		<input type="text"/>
	Door Assist Equipped	B072		<input type="text"/>
	Come Along Door Device Eq	B047		<input type="text"/>

Owner	UNION	RAIL
Lessee	LESE	
Maintenance Party	MRPT	AARE
Mark Owner Category	B021	
Prior Equipment ID	PRID	
Original Cost	A184	80000 usd
Ind for Posting A&B	A128	
Addition & Betterment	A003	
Ledger Value	A150	
Last Update Date	B122	03/05/2009
Equipment Add Date	B052	03/03/2009
Status Change Reason	USCR	0 - Status Changed

Data Simplification Example – Bearing and Brake Shoe



Data Simplification Example - Fitting Codes

Legacy Fitting Codes

CY

RB

GR

FR

AB

TP

New Unique Elements

Canopy Equipped

Retention Bar Equipped

Refrigerator Type

Floor Roller Equipped

Adjustable Belt Rail Eqpd

Tie Down Equipped

New Data Concepts and Terms

Data Elements – A057 = Coupler Code

System Generated Elements – ETC Codes

Mandatory Elements – Weights and Dimensions

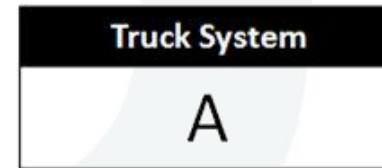
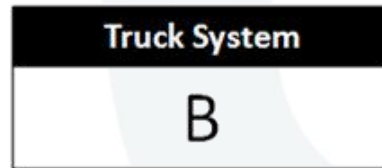
Confidential Data – Built Date

Equipment Rights – SSO IDs are assigned security

Component Data – Wheel Size

Components

Components



Articulated Flat Cars with 4 Truck Systems

Articulated Component locations



Truck System	
B	
Truck B	Axle Spacing 1
Wheel Diameter	Axle Spacing Distance
Journal Size	
Axle Count	

Truck System	
C	
Truck C	Axle Spacing 2
Wheel Diameter	Axle Spacing Distance
Journal Size	
Axle Count	

Truck System	
D	
Truck D	Axle Spacing 3
Wheel Diameter	Axle Spacing Distance
Journal Size	
Axle Count	

Truck System	
A	
Truck A	Axle Spacing 4
Wheel Diameter	Axle Spacing Distance
Journal Size	
Axle Count	

Components



Truck System	
B	
Truck B	Axle Space 1
Wheel Diameter	Axle Spacing Distance
Journal Size	
Axle Count	

Truck System	
A	
Truck B	Axle Space 2
Wheel Diameter	Axle Spacing Distance
Journal Size	
Axle Count	

Components on Equipment

Truck Systems

Trucks

Axle Spacing

Draft Systems

Unit Segments

Loading Capabilities

User References

Railinc.com
includes links to
reference
documents
including;

User Guide
Data Specification
Reference Files



A screenshot of the Railinc Corporation website, specifically the "Umler System Reference Materials" page. The browser window is titled "Railinc Corporation | Reference Materials - Microsoft Internet Explorer provided by Railinc". The address bar shows "https://www.railinc.com/rportal/web/guest/umlerreferences". The website has a blue header with the Railinc logo and navigation links: "ABOUT RAILINC", "PRODUCTS & SERVICES", "COLLABORATION", and "REFERENCE FILES". A sidebar on the left lists various services and products, including "Products and Services Overview", "Car Accounting", "Damage Prevention and Loading Services", "Equipment Health", "Equipment Repair", "Financial Data Exchanges", "Messaging", "Publications", "Railroad Clearinghouse", "Reference Files", "Tracing Products", "Transportation Management", and "Umler". The main content area is titled "Umler System Reference Materials" and contains text about the importance of reference materials and links to the "Umler User Guide", "Umler Data Specification Manual (DSM)", and "Umler Industry Reference Files (.zip)". A right sidebar contains an "ACCOUNT ACCESS" section with fields for "User ID" and "Password", a "SSO Login" button, and links for "Register Here", "Forgot Password?", and "Forgot User ID?". Below this is a "PRODUCTS & SERVICES" section with a "Umler/EMIS" link, and a "REFERENCE FILES" section with a "FindUs.Rail" link. At the bottom right is a "CONTACT US" section featuring a "CUSTOMER SUPPORT CENTER" with a phone number (1-877-RAILINC) and email (csc@railinc.com), along with the company's address: 7001 Weston Parkway, Ste. 200, Cary, NC 27513, (877) 724-5462. The browser status bar at the bottom shows "Trusted sites" and "100%".

User Guide



Table of Contents

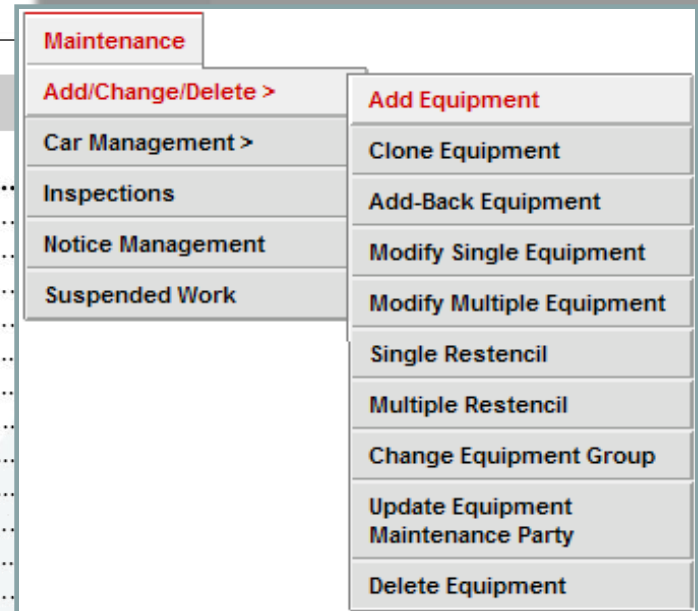
Welcome to Umler	1
Overview	1
What's New in Version 3.2.....	1
Functions	1
User Guide Structure	2
System Requirements.....	3
Web Browser	3
PDF Viewer	3
CSV Format.....	4
Supporting Documentation	4
TRAIN II, Volume 3 – Umler™	4
Umler™ Data Specifications Manual	4
Railinc Contacts.....	5
⋮	⋮
Maintenance	55
Menu & Options	55
Add/Change/Delete.....	56
Add Equipment.....	57
Clone Equipment	61
Add-Back Equipment	63
Modify Single Equipment.....	65
Modify Multiple Equipment	67

User Guide



Table of Contents

Welcome to Umler	
Overview	
What's New in Version 3.2	
Functions	
User Guide Structure	
System Requirements	
Web Browser	
PDF Viewer	
CSV Format	
Supporting Documentation	
TRAIN II, Volume 3 – Umler™	
Umler™ Data Specifications Manual	
Railinc Contacts	
⋮	
Maintenance	55
Menu & Options	55
Add/Change/Delete	56
Add Equipment	57
Clone Equipment	61
Add-Back Equipment	63
Modify Single Equipment	65
Modify Multiple Equipment	67





Data Specification Manual



Data Specification Manual

Table of Contents

Box Cars	1
General	1
Weight	3
Dimension	4
Door	6
Specification	7
Feature	9
CarManagement	11
Train Service	11
Truck Components	12
Draft System Components	12
Unit Segment Components	14
Miscellaneous	14
Inspection	14



Display Unit

[Lookup](#)

[Lookup Result](#)

[Collapse All](#)

[Expand All](#)

Equipment ID: AAR

[General](#) [Weight](#) [Dimension](#) [Door](#) [Specification](#) [Feature](#) [CarManagement](#)

+ General

+ Weight

+ Dimension

+ Door

+ Specification

+ Feature

+ CarManagement

+ Train Service

+ Truck Components

Prior Equipment ID**PRID**

The previous reporting mark and number on the equipment

Value does not carry forward for SingleClone MultiClone.

Validation Rules for PRID

- Invalid Prior ID specified, Prior ID was never made Active or a more recent EIN exists.
- Prior ID belongs to a different equipment category (Car, Locomotive, EOT, Trailer/Container)
- Prior ID is in EIN conflict and must be resolved to continue
- Prior ID used for another equipment
- Prior and target equipment's built date should match
- Prior and target equipment's built date should match
- Prior ID must be specified when EIN is specified

Original Cost (US Dollars)**A184**

The original manufacturer selling price

Data is Confidential.

Valid Range of Numeric Values for A184

Minimum	Maximum
0	9999999

Validation Rules for A184

- Original Cost equals Ledger Value when no Addition and Betterment
- Original Cost unequal to Ledger Value when Addition and Betterment
- Original Cost must be equal to the Ledger Value if A&B Indicator is not set
- Original Cost must not be equal to the Ledger Value if A&B Indicator is set
- Public equipment requires an Original Cost
- Private Covered Hoppers requires an Original Cost

For connected unit cars report the total original costs for all units in the set.

Indicator for Positive/Negative A&B**A128**

A code indicating the positive or negative adjustment to the original cost of the equipment

Data is Confidential. Online this field is abbreviated as 'Ind for Pos/Neg A&B'.

Permissible Values for A128

N Negative P Positive

UMLER1 is signed on for company AARE - RAILINC Umler Test Company[Home](#)[Query](#)[Maintenance](#)[Upload / Download](#)[Account Administration](#)[Contact Us](#)**Display Unit**[Lookup](#)[Lookup Result](#)[Collapse All](#)[Expand All](#)

Equipment ID: AARE 101

[General](#) [Weight](#) [Dimension](#) [Door](#) [Specification](#) [Feature](#) [CarManagement](#) [TrailerManagement](#)**General**

Element Name	ID	Flag	Value
Status Code	USCD	●	P - PRE-REGISTERED
Mechanical Designation	UMMD	● ▲	RBL - Box-Refrigerator (Bunkerless) with loading and stowing device
Equipment Type Code	UMET		R510
Built Date	BLDT	●	01/01/2008
Rebuilt Date	RBDT		
Rebuilt Flag	RBFL		
Owner	UMOW	●	AARE
Lessee	LESE		
Maintenance Party	MNPT		AARE
Mark Owner Category	B201		
Prior Equipment ID	PRID		
Original Cost	A184		80000 usd
Ind for Pos/Neg A&B	A128		
Addition & Betterment	A003		
Ledger Value	A150		
Last Update Date	B122		03/05/2009
Equipment Add Date	B082		03/03/2009
Status Change Reason	USCR		
Status Change Date	USCT		

Original Cost (US Dollars)

A184

The original manufacturer selling price

Data is Confidential.

Valid Range of Numeric Values for A184

Minimum	Maximum
0	9999999

Validation Rules for A184

- Original Cost equals Ledger Value when no Addition and Betterment
- Original Cost unequal to Ledger Value when Addition and Betterment
- Original Cost must be equal to the Ledger Value if A&B Indicator is not set
- Original Cost must not be equal to the Ledger Value if A&B Indicator is set
- Public equipment requires an Original Cost
- Private Covered Hoppers requires an Original Cost

For connected unit cars report the total original costs for all units in the set.

Element Name

Description

Element ID

Original Cost (US Dollars)

A184

The original manufacturer selling price

Data is Confidential.

Valid Range of Numeric Values for A184

Minimum	Maximum
0	9999999

Valid Values

Validation Rules for A184

- Original Cost equals Ledger Value when no Addition and Betterment
- Original Cost unequal to Ledger Value when Addition and Betterment
- Original Cost must be equal to the Ledger Value if A&B Indicator is not set
- Original Cost must not be equal to the Ledger Value if A&B Indicator is set
- Public equipment requires an Original Cost
- Private Covered Hoppers requires an Original Cost

For connected unit cars report the total original costs for all units in the set.

Data Rules

Notes



PRODUCTS & SERVICES

Products and Services
Overview

Car Accounting

Damage Prevention and
Loading Services

Equipment Health

Equipment Repair

Financial Data Exchanges

Messaging

Professional Services

Publications

Railroad Clearinghouse

Reference Files

Tracing Products

[Products & Services](#) » [Umler](#) » Umler/EMIS Project Site

Get Ready for the New Umler

The Umler Equipment Management Information System (Umler/EMIS) represents one of the most significant, far reaching technology changes in the rail industry. Umler data is deeply embedded in rail industry operations and provides a wealth of information to rail carriers, equipment owners, and repair shops. This website contains training information, instructional web demos, town hall meetings schedules and more to help you get ready for the new Umler.

More information will be posted on this website soon.



- [Project Overview](#)
- [Event Schedule](#)
- [Training](#)
- [Media Kit](#)

Project Update:

On-Track: Umler Testing and Data Quality Efforts Underway

The Umler/EMIS project is on-track and on-target for implementation beginning on July 25, 2009. System testing has begun and the project's data quality

ACCOUNT ACCESS

User ID:

Password:

[Register Here](#)

[Forgot Password?](#)

[Forgot User ID?](#)



PRODUCTS & SERVICES

Umler/EMIS

Get ready for the new
Umler. Click here for more.



REFERENCE FILES

FindUs.Rail

Quickly find critical contacts
from across the rail industry.

CONTACT US

**CUSTOMER
SUPPORT
CENTER**

1-877-RAILINC
csc@railinc.com



Umler: Getting Started Summary

- Introduction
- Benefits of New Umler
- Interface & Navigation Functionality
- Components
- User Resources
 - Guide and Specification Manual
- Umler Site

Additional Training Resources

- Training Module Series
 - Umler: Core Functions 1
 - Umler: Core Functions 2
 - Umler: Administration Functions
- Training Module Slide Sets
- Web demos on Railinc.com